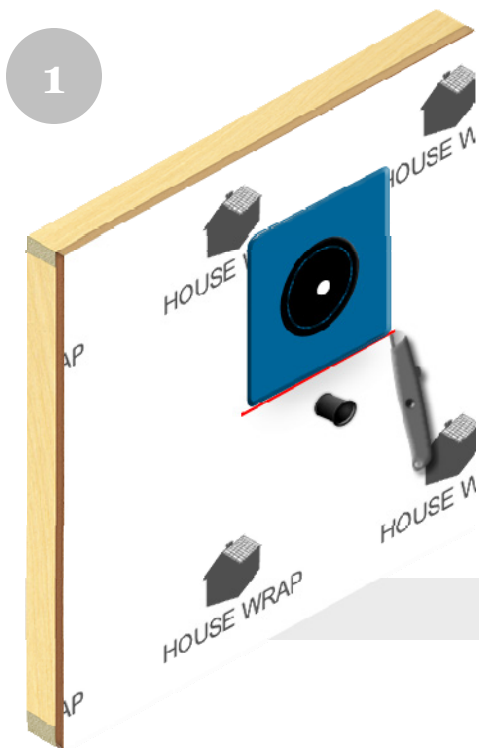
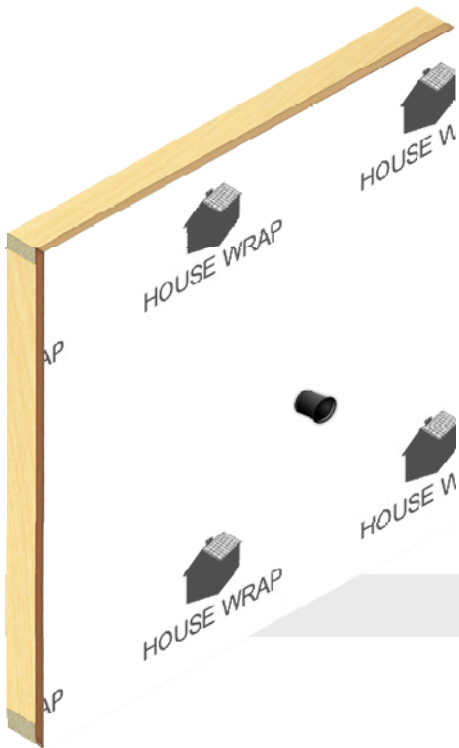


Click here to email Sales@Eco-BuildingProducts.com
Click here to order online at Eco-BuildingProducts.com
Click here to call us at 231.399.0700

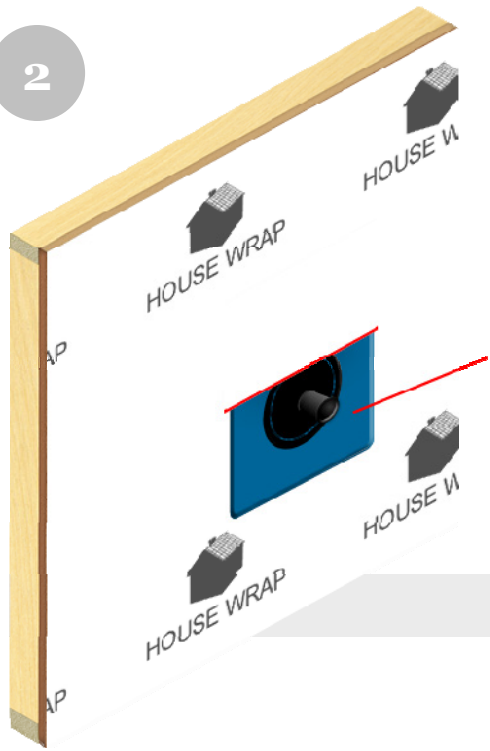
Installing Plumbing Flashing *after* WRB

IMPORTANT: Always refer to house wrap or building paper manufacturer's guidelines



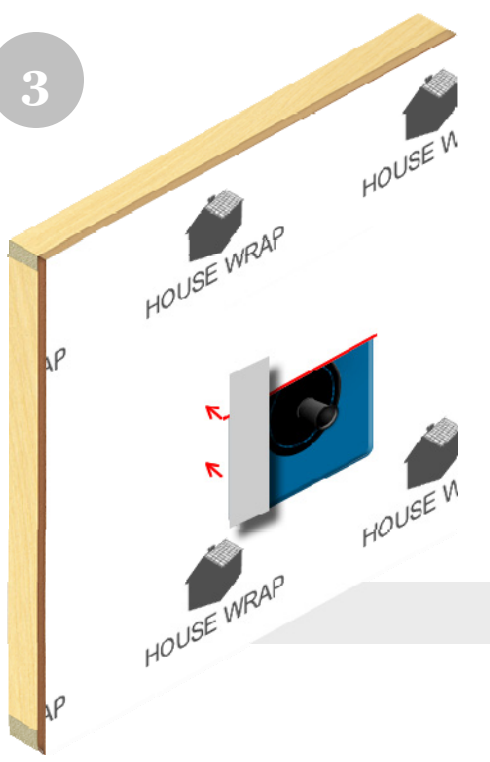
Using the Quickflash® panel as a guide, mark the length of the panel plus 1/4" on each side 2" above penetration onto the WRB and using a utility knife, cut a slit along the mark.

2



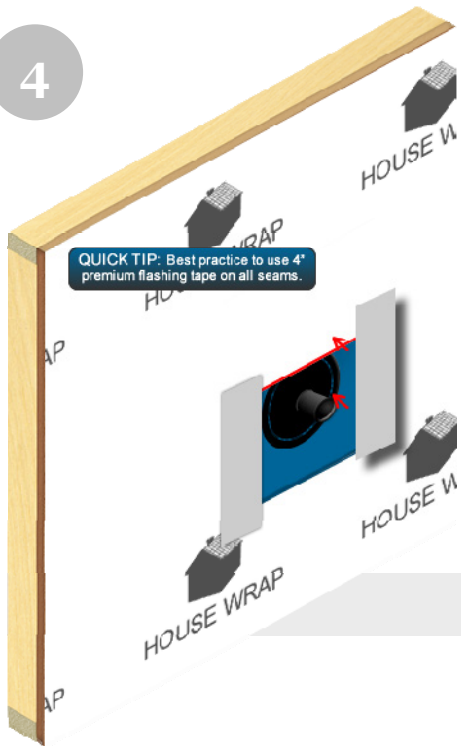
Slide the Quickflash® panel up underneath the WRB and over the penetration pressing down firmly to ensure a flush seal.

3



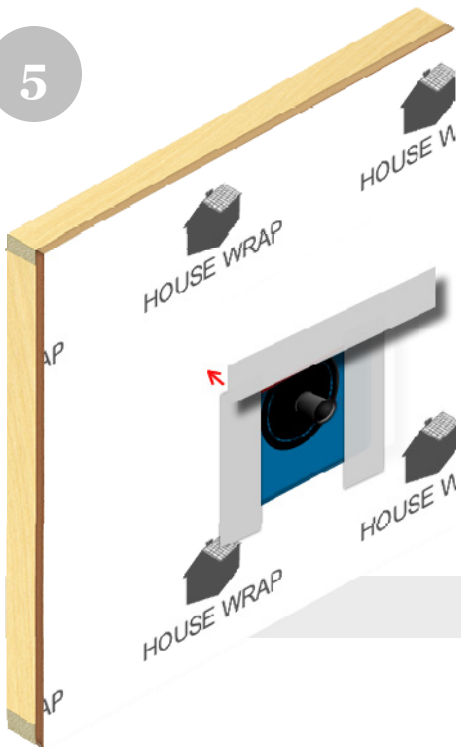
Tape on left side.

4



Tape on right side.

5



Tape across the top.