



WICANDERS

Wicanders has a legacy that goes back to 1868. It is part of Amorim Cork Flooring, the global leading brand in cork-based flooring, present in more than 80 countries worldwide. Its promise is to provide Floors for Living, ready for real life, for our home and office, for our different rhythms, for our family and pets. For all those wonderful and simple, yet sometimes unexpected moments, thanks to Wicanders durability and **performance**.

Over the years, Wicanders has developed sustainable floors with exclusive properties due to its cork benefits. By combining state of the art technology with the exclusive natural properties of cork, a higher standard of **comfort** in flooring is achieved. Our products are able to provide a silent and thermally insulated environment that endures impacts and is very comfortable to walk and stand on.

**Wicanders means
everyday comfort, lifetime performance.**

AMORIM CORK FLOORING

An aerial photograph showing a large body of water on the left, transitioning into a grassy bank with several cork oak trees on the right. The water is a deep blue, and the trees are green with distinct shadows cast on the ground. The overall scene is a natural landscape.

CORK: Inspired by Nature

Inspired by Nature, Wicanders represents an unique balance between the creation of innovative products and the protection of the environment.

One of cork's most extraordinary properties can be found in its biological origins. In fact, extracting cork does not harm the tree that it comes from. It is removed every nine years, and not a single tree is cut down in the process.

Cork is the outer bark of the cork oak tree (*Quercus suber* L.), a slowly growing tree from the Mediterranean with a lifespan of around 200 years and plays a central role in the environmental, economic and social development of this region.

With unique properties, cork is 100% natural and fully biodegradable, renewable and recyclable.



9 YEARS

The period of time between each cork oak harvesting.

100.000

Direct and indirect jobs are created by cork industry

NO TREES ARE DAMAGED

Or cut down.

CO₂ RETENTION

The cork oak tree retains 5x more CO₂ from the atmosphere than any other tree, helping to reduce Global Warming Potential

CORK HARVESTING

Is the highest paid agricultural job in the world.

200 YEARS

The average lifespan of a cork oak tree.

Sustainable by heart

ENVIRONMENT



No Trees are damaged or cut down during the harvesting

The extraction of cork and its related industries are remarkably sustainable. This is because the tree is never cut down or damaged during the extraction process and the bark regenerates itself after each harvesting.



Positive ecological impact

The cork oak tree retains 5x more CO₂ from the atmosphere than any other tree, helping to reduce Global Warming Potential (GWP).

ECONOMY



Rural areas economic engine

The cork oak forest is essential for the economic development of rural areas in the Mediterranean region, by creating jobs and activities related to the harvesting and treatment of cork. WWF estimates that more than 100,000 people are economically dependent of cork-related business activities.



Highest paid agricultural job

Cork harvesting is an activity that requires experience and high skills, to prevent damaging the tree during the process. Therefore this activity is the highest paid agricultural job in the world.

SOCIAL



Crossing generations

More than a job, harvesting is a handcraft work that requires a deep knowledge of the forest and the technique. Thus to be able to perform this activity takes several years of training, a know-how that crosses family generations.



Prevent rural desertification

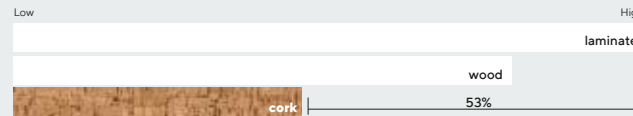
Cork harvesting is a regular and cyclical process, creating a continuous activity that contributes to settle people in areas at risk of desertification.

From Nature, to your special space.

Our products are designed to resist under the toughest conditions, always with incredible stability and exceptional **performance**.

Cork offers a world of **comfort** to be discovered by your feet.

WALKING SOUND



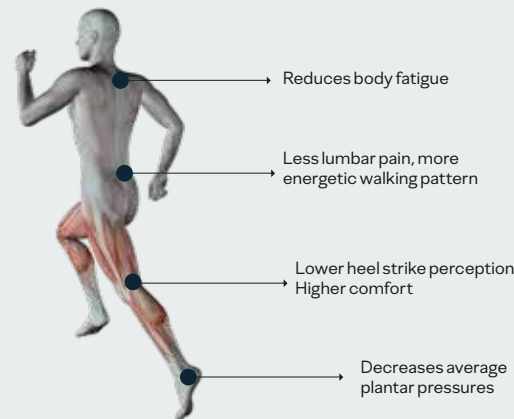
Silence

Reduces the walking sound up to 53%.



Impact Resistance

Highest shock absorbing performance.



Walking Comfort

Wicanders cork floors are the perfect mix to reduce heel strike impacts and related body tensions, but stable enough to help the foot impulse and provide the needed stability to reduce effort on walking and decrease body fatigue.





Indoor Air Quality

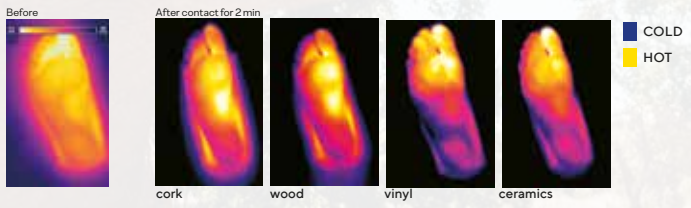
Compliance with the strictest indoor air quality standards after being tested on over 2000 potential chemicals.



Natural Thermal Insulation

Optimal floor temperature all year round.

INFRARED FOOT TEMPERATURE



cork

Go

10

Essence

16





cork

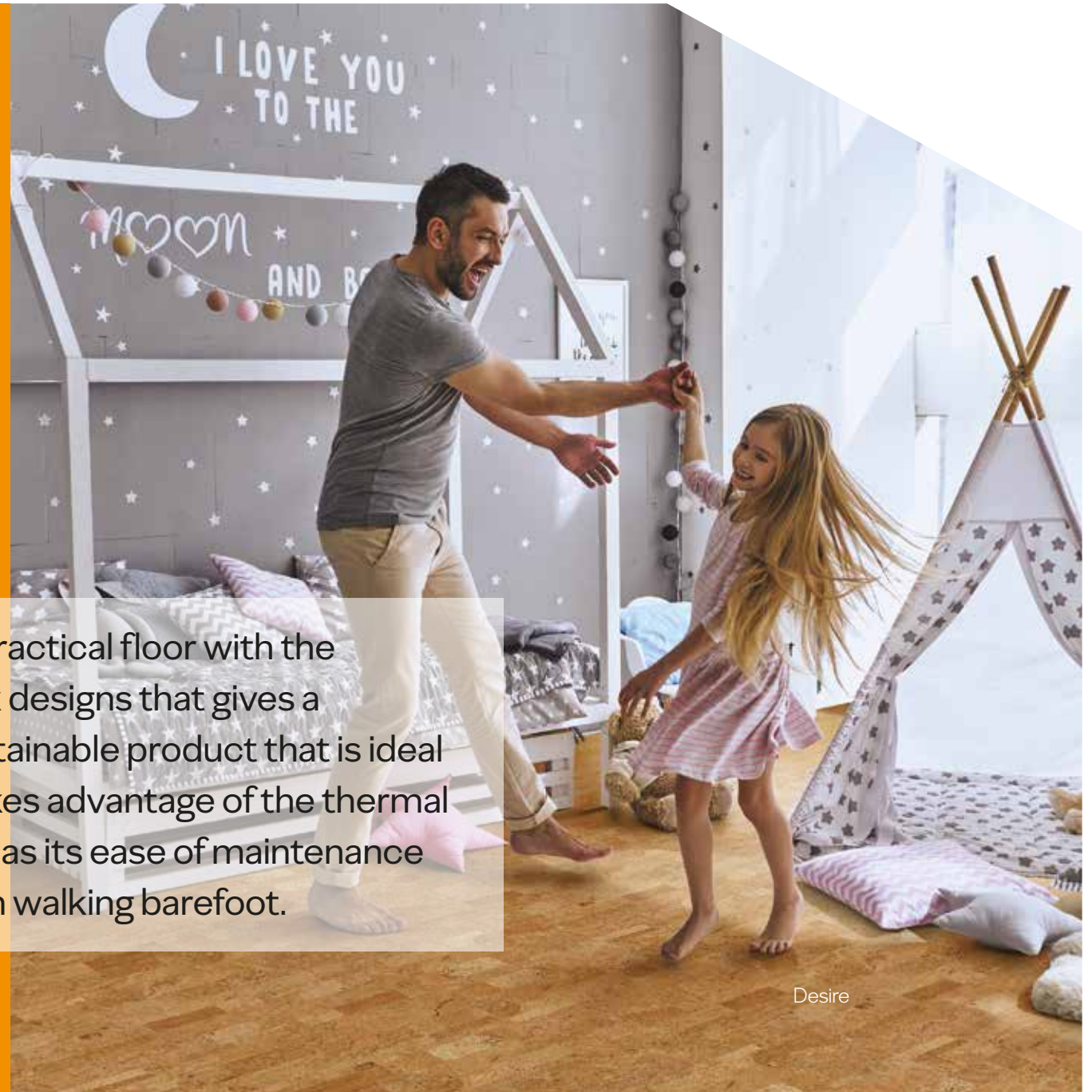
A world of solutions
at your feet.

cork Go

Developed to be an easy and practical floor with the unique beauty of timeless cork designs that gives a seamless look to the floor. Sustainable product that is ideal for residential use. Cork Go takes advantage of the thermal and acoustical benefits as well as its ease of maintenance and outstanding comfort when walking barefoot.

Formats

35 5/8 x 115/8 x 13/32"



Desire



Moment

GA01002 35 5/8 x 115/8 x 13/32"



Whim

C822001 35 5/8 x 115/8 x 13/32"



Desire

GA21003 35 5/8 x 115/8 x 13/32"



Charm

GB01003 35 5/8 x 115/8 x 13/32"

Dance, laugh, play freely!

When it comes to choosing the ideal flooring for a home, there is no better option than cork floors. Perfect for ones who want the comfort while walking around barefoot, playing freely. Sound reduction helps keep the home quiet and calm. Chose the most suitable and beautiful look for your home.



Allure

GB02002 35 5/8 x 115/8 x 13/32"



Allure

Technical solution

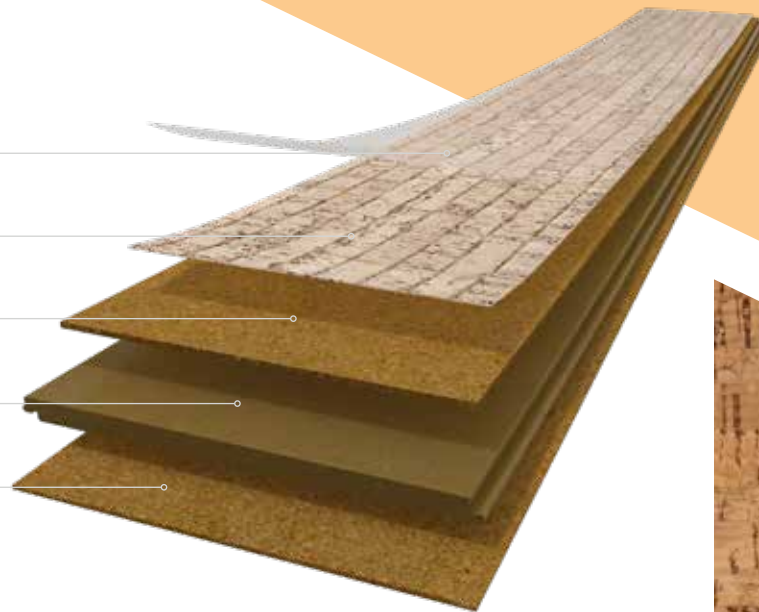
PROTECTIVE SURFACE

GENUINE CORK VENEER

AGGLOMERATED CORK 3,2MM

HDF – HIGH DENSITY FIBERBOARD WITH 2G LOCKING SYSTEM

INTEGRATED CORK UNDERLAY 1,2MM



Finishing & Warranty



XTRAMATT surface has a unique natural look and feel, combined with the resistance and performance of an UV finish, focused on environmental friendly properties and ease of maintenance.



Technical Data Sheet

Level of use Domestic	ISO 10874	Class	
Level of use Commercial	ISO 10874	Class	--
Finish Description	---	---	XTRAMATT
	Standard-Test Method	Unit	Specification

General Properties - EN 14085 + EN 12104 + EN 655

Dimensions: Width Length	EN ISO 24342	mm	± 0,10 up to max. 0,5 max. 2,0
Overall thickness	EN ISO 24346	mm	± 0,25
Squareness	EN ISO 24342	mm	≤ 0,50
Straightness measured at the surface layer	EN ISO 24342	mm	≤ 0,30
Flatness of the panel (Length - Concave / Convex)	EN 14085 (Annex A)	%	≤ 0,50 / ≤ 1,0
Flatness of the panel (Width - Concave / Convex)	EN 14085 (Annex A)	%	≤ 0,10 / ≤ 0,15
Openings between panels	EN 14085 (Annex B)	mm	≤ 0,20
Height difference between panels	EN 14085 (Annex B)	mm	≤ 0,20
Dimensional stability (humidity)	EN 669 (Annex C)	%	≤ 5
Mass per unit area	ISO 23997	g/m ²	Nominal Value (8000) -10%; +13%

Classification Properties - EN 14085 + EN 12104 + EN 655

Nominal thickness for cork surface	EN ISO 24340	mm	≥ 2,5
Residual indentation	EN ISO 24343-1	mm	≤ 0,40

Safety properties - EN 14041

Fire resistance	EN 13501-1	Classe	E _{fls1}
Slip classification	EN 13893	Classe	DS
Formaldehyde emission	EN 717-1	Classe	E1
Electrical behaviour	EN 1815	KV	Not Antistatic
Content pentachlorophenol (PCP)	EN 14041 (Annex B)	mg/Kg	PCP Free

Optional properties

Stains resistance	ISO 26987(a)	Grade (b)	Grade 0 (iodine: Grade 3)
Thermal resistance	EN 12667	(m ² k)/W	R ≤ 0,150



Greenguard Certification helps the identification of interior products and materials that have low chemical emissions, improving the quality of the air in which the products are used. It promotes global sustainability, environmental health, and safety.



TUV-PROFICERT – product Interior brand is a voluntary, independent label for VOC-emission and quality of floorings. The results comply with the emission thresholds of AgBB, Belgian VOC regulation, Finnish M1 classification, BREEAM Exemplary Level, LEED v4 (outside North America), RAL-UZ 120 and Austrian Eco Label (Guideline UZ 56).



As of January 2012, France has adopted regulations that limit total VOC emissions of building products. Manufacturers, selling their products in France must obtain a classification ranging from A+ (very low emissions) to C (high emissions). The declared goal is to improve indoor air quality in private/ commercial buildings.



The goal of the German Cork Association is to assure the quality of cork products, as well as the optimization of manufacturing processes and the support of research projects.



CE marking is a certification mark that indicates conformity with health, safety and environmental protection standards for products sold within the European Economic Area (EEA).



5 POINTS



7 POINTS

- (a) The following products were tested: Disinfectant, Petroleum spirit, C₂H₅OH, NH₄OH, Citric acid and Iodine.
- (b) Grade 0 - Unchanged / Grade 1 - Very little change / Grade 2 - Little change / Grade 3 - Change / Grade 4 - Strong change.

Wicanders Flooring Collection is supported by a warranty. Please, read the warranty terms on www.wicanders.com

cork

Essence

Rich in style, charm and sophistication, Cork Essence expresses its personality through the unique designs and formats aligned with modern interior design trends. In harmony with nature, each board is unique. The ideal floor for creating ambiances full of charm, combined with the unique comfort of cork and the performance requirements of residential and light commercial applications.

Formats

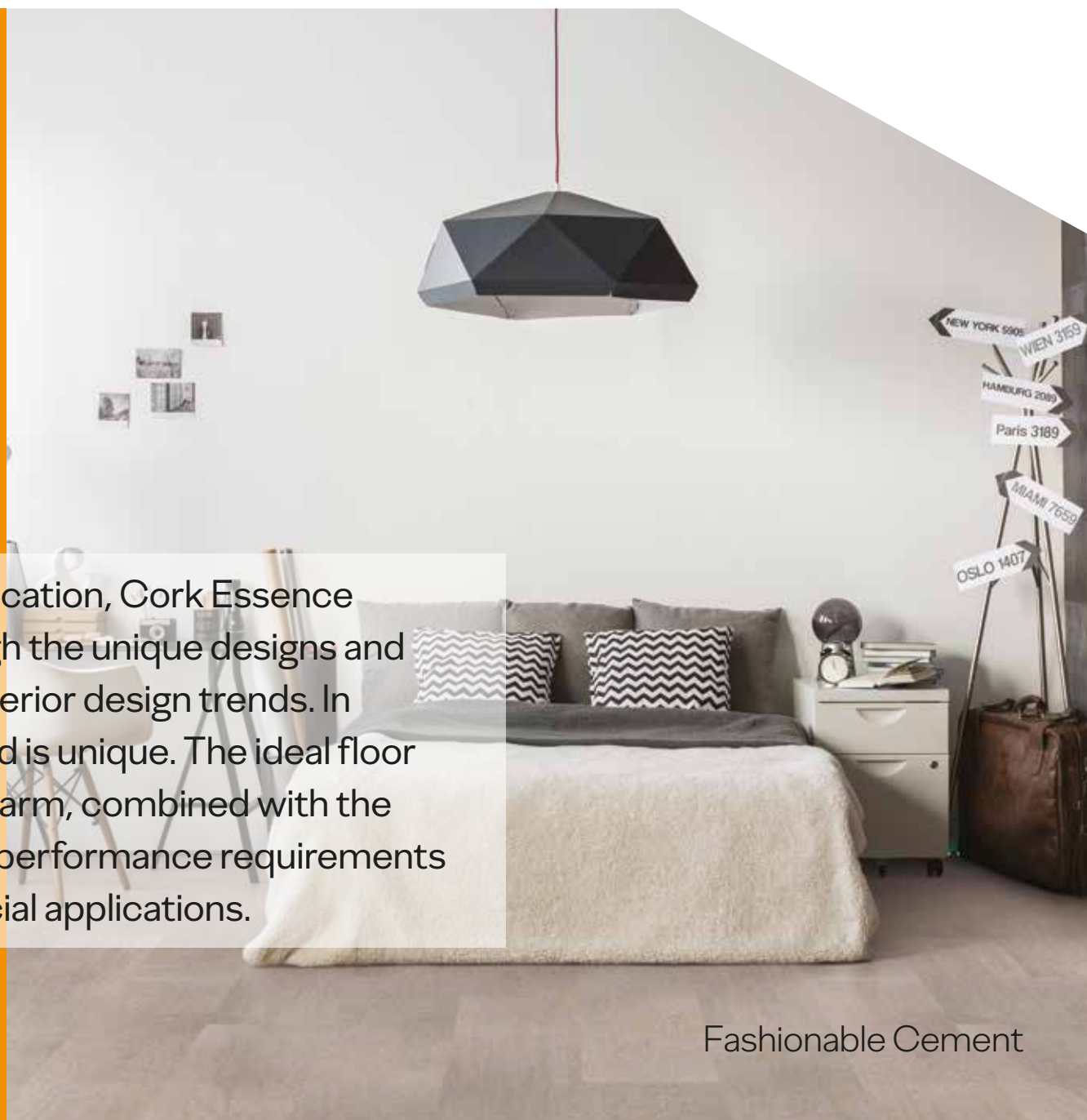
35 5/8 x 11 5/8 x 13/32"

481/32 x 7 9/32 x 13/32"



Floating

Fashionable Cement





Fashionable Cement
C85L001 35 5/8 x 11 5/8 x 13/32"



Originals Accent
O841002 35 5/8 x 11 5/8 x 13/32"



Flock Moonlight
C81X004 48 1/32 x 7 9/32 x 13/32"



Linn Blush
C81O003 35 5/8 x 11 5/8 x 13/32"



Flock Chestnut
C84A004 48 1/32 x 7 9/32 x 13/32"

Class When Nature meets Charm

In modern interior design, the creation of spaces with style and personality starts with beautiful and expressive floors. Aligned with the market trends, our team of experts has created an unique Class collection that combines different shapes of natural Cork.

Rich in style, charm and sophistication, and in harmony with nature, Class also provides an unmatched wellbeing that will for sure be very pleasant when getting together with family and friends.

Light colored flooring like Flock Moonlight is the splendid background for soft colors and it will balance smoothly your classic and modern furniture with a minimalistic look.





Flock Moonlight

Technical solution

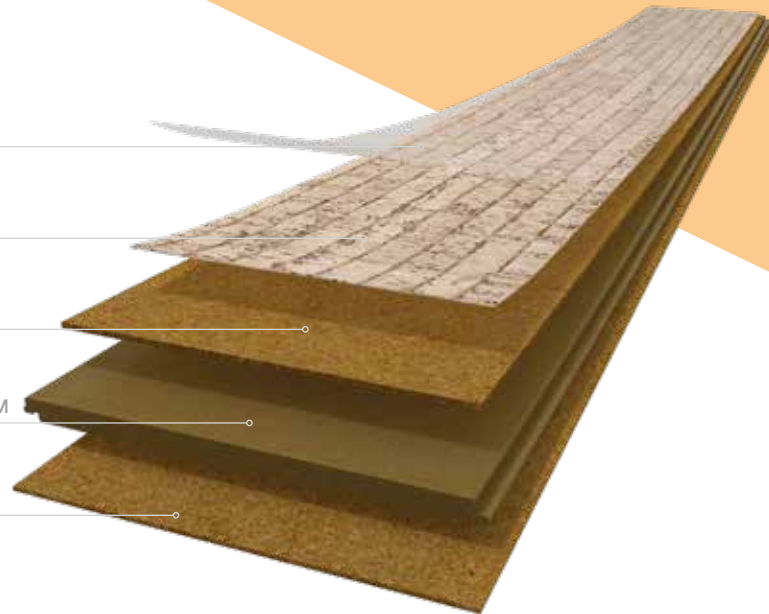
PROTECTIVE SURFACE

GENUINE CORK VENEER

AGGLOMERATED CORK 3,2MM

HDF – HIGH DENSITY FIBERBOARD WITH 2G LOCKING SYSTEM

INTEGRATED CORK UNDERLAY 1,2MM





Finishing & Warranty



XTRAMATT + surface is a High Resistance Acrylic UV finish suitable for residential and light commercial areas. It enhances the natural beauty and environmental friendly properties of cork floors, while assuring a high performance for a long time.



Technical Data Sheet

Level of use Domestic	ISO 10874	Class	
Level of use Commercial	ISO 10874	Class	
Finish Description	---	---	XTRAMATT +
	Standard-Test Method	Unit	Specification

General Properties - EN 14085 + EN 12104 + EN 655

Dimensions: Width Length	EN ISO 24342	mm	± 0,10 up to max. 0,5 max. 2,0
Overall thickness	EN ISO 24346	mm	± 0,25
Squareness	EN ISO 24342	mm	≤ 0,50
Straightness measured at the surface layer	EN ISO 24342	mm	≤ 0,30
Flatness of the panel (Length - Concave / Convex)	EN 14085 (Annex A)	%	≤ 0,50 / ≤ 1,0
Flatness of the panel (Width - Concave / Convex)	EN 14085 (Annex A)	%	≤ 0,10 / ≤ 0,15
Openings between panels	EN 14085 (Annex B)	mm	≤ 0,20
Height difference between panels	EN 14085 (Annex B)	mm	≤ 0,20
Dimensional stability (humidity)	EN 669 (Annex C)	%	≤ 5
Mass per unit area	ISO 23997	g/m ²	Nominal Value (8000) -10%; +13%

Classification Properties - EN 14085 + EN 12104 + EN 655

Nominal thickness for cork surface	EN ISO 24340	mm	≥ 3,0
Castor chair	EN 425	Visual effect after 25 000 cycles	No disturbance to the surface other than slight change in appearance and no delamination shall occur
Simulated movement of a furniture leg	EN 424	Visual effect	No damage shall be visible after testing with a type 2 foot
Residual indentation	EN ISO 24343-1	mm	≤ 0,40

Safety properties - EN 14041

Fire resistance	EN 13501-1	Classe	E _{fl,s1}
Slip classification	EN 13893	Classe	DS
Formaldehyde emission	EN 717-1	Classe	E1
Electrical behaviour	EN 1815	KV	Not Antistatic
Content pentachlorophenol (PCP)	EN 14041 (Annex B)	mg/Kg	PCP Free

Optional properties

Stains resistance	ISO 26987(a)	Grade (b)	Grade 5 (NaOH Grade 4)
Thermal resistance	EN 12667	(m ² K)/W	R _e ≤ 0,150
Impact sound reduction	ISO 140-8	dB (ΔL _w)	16
Reduction improvement	EPH/IHD Works Standard 431	dB(A)	13.2
Difference of loudness		%	51.6

ASTM Standards

IIC Impact insulation class	ASTM E492 /ASTM E989	IIC (dB)	58
STC Classification for rating sound insulation	ASTM E90 /ASTM E413	STC (dB)	54
Ignition characteristics of finished textile floor covering systems	ASTM D2859	---	met the criteria
Optical density of smoke	ASTM662	DS(4,0min)	23,7
		DS(4,0min)	32,3
Critical radiant flux	ASTM E648	(W / cm ²)	0,38
Residual indentation	ASTM F1914	(%)	0,2
Thermal conductivity	ASTM C 177	W/(m.K)	0,108
Thermal resistance		(m ² K)/W	0,0999



Greenguard Certification helps the identification of interior products and materials that have low chemical emissions, improving the quality of the air in which the products are used. It promotes global sustainability, environmental health, and safety.



TUV-PROFICERT – product Interior brand is a voluntary, independent label for VOC-emission and quality of floorings. The results comply with the emission thresholds of AgBB, Belgian VOC regulation, Finnish M1 classification, BREEAM Exemplary Level, LEED v4 (outside North America), RAL-UZ 120 and Austrian Eco Label (Guideline UZ 56).



As of January 2012, France has adopted regulations that limit total VOC emissions of building products. Manufacturers, selling their products in France must obtain a classification ranging from A+ (very low emissions) to C (high emissions). The declared goal is to improve indoor air quality in private/ commercial buildings.



The goal of the German Cork Association is to assure the quality of cork products, as well as the optimization of manufacturing processes and the support of research projects.



CE marking is a certification mark that indicates conformity with health, safety and environmental protection standards for products sold within the European Economic Area (EEA).



5 POINTS



7 POINTS

- (a) The following products were tested; acetone, coffee, NaOH, H₂O₂, shoe polish.
- (b) Grade 5 - no visible change / Grade 4 - very minor changes / damages at the surface / Grade 3 - minor changes / damages at the surface / Grade 2 - Strong changes / damages at the surface / Grade 1 - Surface destruction.

Wicanders Flooring Collection is supported by a warranty. Please, read the warranty terms on www.wicanders.com

Product Selector

RANGE	GO	ESSENCE	
FINISHING	XtraMatt	XtraMatt +	
CLASS OF USE (ISO 10874)	23 Residential	23 Residential 31 Commercial	
BEVEL	No Bevel	No Bevel	4 Side Bevel 1mm
DIMENSION (inches)	35 5/8 x 11 5/8 x 13/32"	35 5/8 x 11 5/8 x 13/32"	48 1/32 x 7 9/32 x 13/32"

ALLURE	GB02002		
CHARM	GB01003		
DESIRE	GA21003		
MOMENT	GA01002		
WHIM	C822001		
ORIGINALS ACCENT		O841002	
LINN BLUSH		C810003	
FASHIONABLE CEMENT		C85L001	
FLOCK CHESTNUT			C84A004
FLOCK MOONLIGHT			C81X004

